



n e x y[®]

CAPTURE CRYSTAL CLEAR RETINAL
IMAGES IN A FULLY AUTOMATIC WAY

VISIONIX
The Vision of the Future



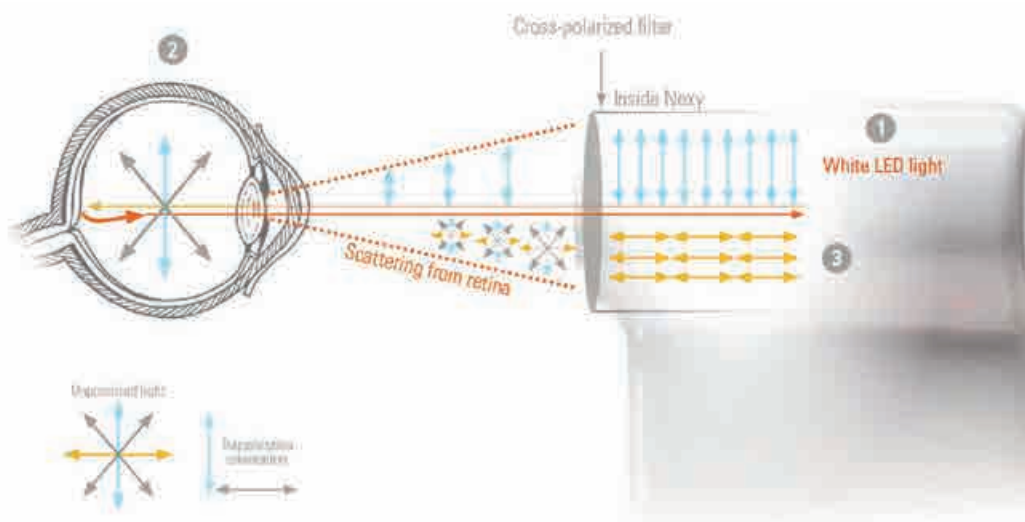
Nexy: retinal screening at a glance

- Fully automated
- Meets social distancing guidelines
- AI compatible



Exclusive technology

Nexy utilises an innovative cross-polarized light technology that provides excellent image quality while maintaining a compact footprint.



AMD



Diabetic Retinopathy



Epiretinal Membrane



Glaucoma

NEXY

VALUE-ADDED FEATURES

- Robotic movements: auto-alignment, autofocus and auto-capture. Just press Start and Nexy does the rest
- Automatic capture of high-quality images for detailed screening and evaluation with minimal personal training
- Pleasant aesthetic: small footprint and ergonomic design
- Modern gesture interaction: the intuitive interface facilitates a quick start and smooth navigation
- Review images from a local PC (in .DCM format as well as jpg/png format) or from an intranet PC
- Review images from the Next Sight website using a personal and secure account
- Teamviewer application for remote assistance



Way to share images

FUNDUS CAMERA
to take retinal images
and perform exams



wifi

bluetooth



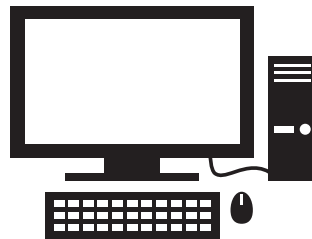
TABLET
To insert patient data
and START exam



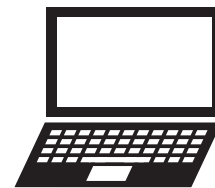
PRIVATE ACCOUNT
(username+PW)
to review images on the password
protected Next Sight website



CLOUD / DICOM server
(storage service where all
images are saved)



PC connected to the
intranet (shared folder)



Local PC (no intranet)
through fundus-adapter



Protection of patient data

Nexy is GDPR compliant.

Patient sensitive data is secure thanks to client-side data encryption. This means that patient data is encrypted on the sender's side, before it is transmitted to a server such as a cloud storage service.

This client-side encryption guarantees secure privacy and GDPR compliance.

n e x y[®]

TECHNICAL SPECIFICATIONS

HARDWARE SPECIFICATION

Field of view	45°
Field of view with mosaic function	90°
Retinal resolution	14 microns
Fixations	7 fixations set-ups
Tablet dimensions	10.4"
Weight	32,4 lbs
Size	13,4 x 16,9 x 18,1 in.

SOFTWARE SPECIFICATION

Image filters (vascular, choroidal, nerve fibre, red free)
Cup-to-disc ratio for glaucoma screening
Automatic mosaic function
Shared intranet folder
DICOM standard compatible
Fundus adapter to transfer images to a local pc



DATA MANAGEMENT

Full AI integration (option)
Cloud-based secure storage
Client-side data encryption
Automatic database backup
Review images from the password protected website, a network shared folder or a local PC
Multilevel account
Access by personal user



ABOUT US

The Luneau Technology group, bringing together the Visionix®, Briot® and Weco® brands, is a major force in the market, with a range of equipment to cover all the Eye Care Professionals' requirements: Refraction and ophthalmic diagnosis, lens inspection in industrial production and lens cutting in the optician's lab.

Our aim has always been to provide you with the latest technologies to permit quicker screening for visual disorders and provide a better quality of life, with ever more effective equipment. Our aim is to provide innovative and increasingly efficient technologies that allow you to rapidly screen for visual disorders, providing your patients with a better quality of life



n e x y[®]



LUNEAU TECHNOLOGY OPERATIONS
2 rue Roger Bonnet, 27340 PONT DE L'ARCHE - FRANCE
Tel. + 33 232 989 132 - Fax + 33 235 020 294 - www.luneautech.com